

AGRICULTURAL TIPPER TRAILERS

LK 14 | LK 16 | LK 18 | LK 22 | SK 22



CLASS IN CAPACITY


VAN GINKEL MACHINES

CLASS IN CAPACITY



Van Ginkel Machines specialises in the manufacture of tipper trailers for agriculture, earthmoving and road building. The extensive standard range can be adapted to the user's requirements with various options. And there is always

the option for a special design to fulfil very specific requirements. Every day in Groenekan, the team is constantly seeking to improve existing products, opportunities for new models and the expansion of the current programme.

- ⦿ **Maximum life**
- ⦿ **Best in class**
- ⦿ **Own production**
- ⦿ **Sophisticated concept**
- ⦿ **High quality finish**
- ⦿ **Maximum load capacity**

***'What we hear from
users goes straight
to our drawing
board.'***





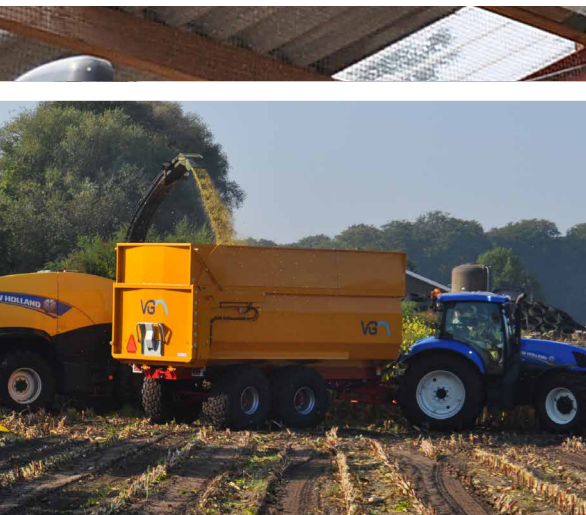
The compact agricultural tipper trailer

The LK 14 tipper is a robust, tandem axle tipper trailer which is suitable for all agricultural work. The tipper is compact in construction and is easily loaded due to its low load height. The load area is fully welded and tapered in design. Thanks to its clever construction, the LK 14 is very versatile and multifunctional. The high quality finish guarantees long life.

MODEL

LK 14





The multifunctional agricultural tipper trailer

The LK 16 kipper is extremely suitable for larger quantities, but remains compact. The high tipping angle of 60° and the smooth finish of the container ensures that all products are unloaded without any problem. The grain chute in the rear tailgate has a wide unloading opening and can be operated from two sides.

MODEL

LK 16



VGN



The ideal agricultural tipper trailer

The LK18 is the best in its class. With an exceptionally good finish and a clever container design, this tipper is a real eyecatcher. The container is manufactured from high quality Hardox steel. The wide viewing grille provides the maximum view of the load area and the rubber seals around the rear tailgate creates a completely sealed container under all conditions. Available with optional steering axle with forced steering.

MODEL

LK 18





The heavy-duty agricultural tipper trailer

The LK22 is the absolute market leader for the transport of agricultural products. The sophisticated construction of this container creates huge volume which allows grain, potatoes, onions, beets and many other products to be transported and unloaded effortlessly. Also available with silage collection scoops. The unique tandem undercarriage is fitted with 150x150 mm BPW axles with 410 x 180 braking, possible with tyres up to 1.70m. The LK22 represents durable technology, high capacity and long life.

MODEL

LK 22





The powerhouses

The SK22 is the ideal tipper trailer for the transport of large quantities of grass, corn and similar products. The fully welded and smooth finished load area ensures problem-free unloading. Furthermore, the rear hinge is placed more toward the centre, which creates the maximum overlap. The tipping cylinder is located in a cardanic suspension and the entire tipper trailer is perfectly finished.

MODEL

SK 22



TANDEM AXLES

* mandatory from 01-01-2018 ● standard ○ optional × not available

	LK 14	LK 16	LK 18	LK 22	SK 22
Hydraulic support leg, operated from the tractor	●	●	●	●	●
Tapering container, for easier unloading	●	●	●	●	●
See-through grill in the container	●	●	●	●	●
Grain chute in the rear tailgate	●	●	●	●	●
Front and rear width lighting	●	●	●	●	●
Rotatable towing eye	●	●	●	●	●
Hose support on the drawbar	●	●	●	●	●
Rubber sprung drawbar	●	●	●	●	●
Bolted mudguards on the load area	●	●	●	●	●
Grease nipples on central main axle	●	●	●	●	●
Tipper cylinder mounted in cardanic suspension	●	●	●	●	●
Excluding wheels and tyres	●	●	●	●	●
Stepladder at front of container	○	○	○	○	○
Tarpaulin rack on the chassis	○	○	○	○	○
6 Tarpaulin rack on the tailgate	○	○	○	○	×
1 Boards at the front of the container in combination with stepladder option	○	○	○	○	○
3 Rubber spout on grain chute	○	○	○	○	○
Extension of the operating handle for the grain chute on left and/or right side	○	○	○	○	○
Wooden protective beam attached to upper edge of container	○	○	○	○	○
Plastic protective beam attached to upper edge of container	○	○	○	○	○
Hydraulic drawbar suspension	○	○	○	○	○
Hydraulic jack leg with hand pump	○	○	○	○	○
Double-acting valve at rear with six-way tap in combination with hydraulic tailgate	○	○	○	○	×
Hydraulic jack leg with six-way tap	○	○	○	○	○
Air braking + ALR valve*	○	○	○	○	○
Hydraulic forced steering of rear axle	○	○	○	○	○
250 mm assembly	○	○	○	○	○
800 mm assembly	○	○	○	○	○
2 Work lamp inside front of container (58R)	○	○	○	○	○
1 rear work lamp	○	○	○	○	○
1 rear work lamp with switch between container and chassis	○	○	○	○	○
Rear tracking plug	○	○	○	○	○
LED lighting	○	○	○	○	○
Plastic toolbox	○	○	○	○	○
Scharmüller K80 pick-up hitch	○	○	○	○	○
Scharmüller K50 connection for steering	○	○	○	○	○
PVG preparation	○	○	○	○	○
Central steering knuckle grease nipples	○	○	○	○	○
Sprayed in company colour (max. 2 colours)	○	○	○	○	○
VGM cover system	○	○	○	○	○
Type LK handles on tailgate	○	○	○	○	○
Commando steering bar with quick release	○	○	○	○	○
Folding LK bumper*	○	○	○	○	○
5 Hydraulically folding LK bumper	○	○	○	○	×
RDW type approval*	○	○	○	○	○
Parking brake	○	○	○	○	○
Reversing alarm	○	○	○	○	○
Wide spread undercarriage 1650	×	×	○	○	○
4 Wide spread steered undercarriage 1850	×	×	○	○	○



		LK 14	LK 16	LK 18	LK 22	SK 22
Exterior dimensions	Length	7200 mm	7200 mm	8200 mm	8900 mm	9550 mm
	Width	2550 mm	2550 mm	2550 mm	2550 mm	2550 mm
	Height	2400 mm	2900 mm	2900 mm	2900 mm	3500 mm
Interior dimensions	Length	5500 mm	5500 mm	6500 mm	7200 mm	7800 mm
	Width	2400 mm	2400 mm	2400 mm	2400 mm	2365 mm
	Height	900 mm	1400 mm	1400 mm	1400 mm	2000 mm
Track width		1950 mm	1950 mm	1950 mm	1950 mm	1950 mm
Plate material of the load area (Hardox)		6-4 mm	5-4 mm (Hardox)	5-4 mm (Hardox)	5-4 mm (Hardox)	6-4 mm
10-hole axles		□150, 410x180	□150, 410x180	□150, 410x180	□150, 410x180	□150, 410x180
Number of braked wheels		4	4	4	4	4



The design and technical specifications of the products in this brochure may be under development and may differ from the actual features. Subject to amendment, typesetting and printing errors. Supply in accordance with the latest submitted version of the Metaalunie terms & conditions lodged with the Clerk of the Court of the district court of Rotterdam.

© 2018 Van Ginkel Machines. All rights reserved.



**CLASS
IN
CAPACITY**

VG
VAN GINKEL MACHINES

Groenekanseweg 26
3737 AG Groenekan
Tel: 0346-218118
Fax: 0346-218030
Email: info@vanginkelmachines.nl
Website: www.vanginkelmachines.nl