

SAND TIPPER TRAILERS

ZK 14 | ZK 18-2 | ZK 18-2 ALU | ZK 22-2 | ZK 22-2 ALU | ZK 30 | ZK 30-2 | ZK 30-2 ALU



CLASS IN CAPACITY


VAN GINKEL MACHINES

CLASS IN CAPACITY



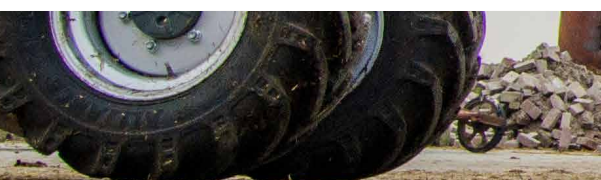
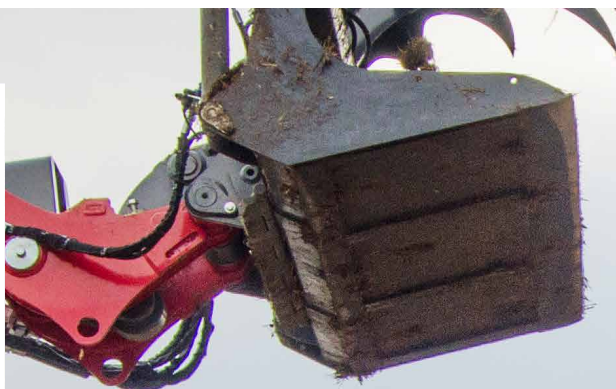
Van Ginkel Machines specialises in the manufacture of tipper trailers for agriculture, earthmoving and road building. The extensive standard range can be adapted to the user's requirements with various options. And there is always

the option for a special design to fulfil very specific requirements. Every day in Groenekan, the team is constantly seeking to improve existing products, opportunities for new models and the expansion of the current programme.

- ⦿ **Maximum life**
- ⦿ **Best in class**
- ⦿ **Own production**
- ⦿ **Sophisticated concept**
- ⦿ **High quality finish**
- ⦿ **Maximum load capacity**

***'What we hear from
users goes straight
to our drawing
board.'***





The compact sand tipper trailer

The ZK 14 tipper is a robust, tandem axle tipper trailer which is suitable for heavy work. The tipper is compact in construction and due to its low load height a small excavator can easily be loaded onto it. The load area is manufactured from Hardox steel as standard and is tapered. This tipper trailer is tailor-made and suitable for almost any application.

MODEL

ZK 14





The robust sand tipper trailer

The extensive load area of the ZK 18-2 tipper trailers make them exceptionally suitable for a heavier work. The 10-hole BPW axles ensure perfect handling and excellent braking capacity. Available with or without aluminium roof hatches and with a range of options, such as a forced steering rear axle. This tailors a standard product to your exact needs.

MODEL

ZK 18-2

ZK 18-2 ALU





Strength from experience

The ZK 22-2 is the absolute market leader in the transport of heavy loads. The fully welded seams and wear-resistant Hardox steel guarantee long life and minimum maintenance costs. The chassis is constructed from tubular sections which ensure great stability.

MODEL

ZK 22-2

ZK 22-2 ALU

ZK 22-2 L



TANDEM AXLES

* mandatory from 01-01-2018 ● standard ○ optional ✕ not available

	ZK 14	ZK 18-2	ZK 18-2 ALU	ZK 22-2	ZK 22-2 ALU	ZK 22-2 L
5						
Tandem axle heavy transport tipper trailer	●	●	●	●	●	●
Hydraulic support leg, operated from the tractor	●	●	●	●	●	●
Tapering container, for easier unloading	●	●	●	●	●	●
Rotatable towing eye	●	●	●	●	●	●
Rear trailer hitch	●	●	●	●	●	●
6						
Safety support underneath container	●	●	●	●	●	●
Hose support on the drawbar	●	●	●	●	●	●
Rubber sprung drawbar	●	●	●	●	●	●
Bolted mudguards on the load area	●	●	●	●	●	●
Grease nipples on central main axle	●	●	●	●	●	●
4						
Tipper cylinder mounted in cardanic suspension	●	●	●	●	●	●
Excluding wheels and tyres	●	●	●	●	●	●
2						
Hydraulic tailgate	●	●	●	●	●	●
LED lighting	●	●	●	●	●	●
Bulkhead at top front of container	○	○	✕	○	✕	○
Hydraulic drawbar suspension	✕	○	○	○	○	○
Hydraulic jack leg with hand pump	○	○	○	○	○	○
Hydraulic jack leg with six-way tap	○	○	○	○	○	○
Air braking	○	○	○	○	○	○
Air braking combined with hydr.	○	○	○	○	○	○
2-pipe braking system hydraulic with ALR*	○	○	○	○	○	○
Air braking + ALR valve*	○	○	○	○	○	○
Hydraulic forced steering	○	○	○	○	○	○
Lockable control box	○	○	○	○	○	○
2 rear work lamps	○	○	○	○	○	○
Rear tracking plug	○	○	○	○	○	○
Reversing alarm	○	○	○	○	○	○
Plastic toolbox	○	○	○	○	○	○
Scharmüller K80 pick-up hitch	○	○	○	○	○	○
Scharmüller K50 connection for steering	○	○	○	○	○	○
PVG preparation	○	○	○	○	○	○
Central steering knuckle grease nipples	○	○	○	○	○	○
Screw-on ZK-2 water barrier	○	○	○	○	○	○
Sprayed in company colour (max. 2 colours)	○	○	○	○	○	○
Automatic lubrication system	○	○	○	○	○	○
Scoop support on the underside of container	○	○	○	○	○	○
Left and right dredge clamps	○	○	○	○	○	○
3						
ZK-2 folding bumper*	○	○	○	○	○	○
RDW type approval*	○	○	○	○	○	○
Parking brake	○	○	○	○	○	○
Stepladder at front of container	○	○	✕	○	✕	○
1						
Type MK2 aluminium roof hatches	✕	✕	○	✕	○	✕
Type MK5 aluminium roof hatches	○	○	✕	✕	✕	○
ZK-2 asphalt board	✕	○	○	✕	○	○
Commando steering bar with quick release	○	○	○	○	○	○
Stepladder on aluminium roof hatches	✕	✕	○	✕	○	✕
Security on aluminium roof hatches	✕	✕	○	✕	○	✕
Extension to side arm	✕	✕	○	✕	○	✕
Wide spread undercarriage 1650	✕	✕	✕	○	○	○
Hydr. Forced steering 1650 Tandem set	✕	✕	✕	○	○	○

ZK 14



ZK 18-2



ZK 18-2 ALU



ZK 22-2



ZK 22-2 ALU



ZK 22-2 L



		ZK 14	ZK 18-2	ZK 18-2 ALU	ZK 22-2	ZK 22-2 ALU	ZK 22-2 L
Exterior dimensions	Length	5700 mm	6350 mm	6360 mm	6850 mm	6860 mm	7150 mm
	Width	2400 mm	2550 mm	2550 mm	2550 mm	2550 mm	2550 mm
	Height	2060 mm	2540 mm	2650 mm	2540 mm	2650 mm	2550 mm
Interior dimensions	Length	4300 mm	4500 mm	4500 mm	5000 mm	5000 mm	5250 mm
	Width	2200 mm	2300 mm	2300 mm	2300 mm	2300 mm	2300 mm
	Height	700 mm	1050 mm	1150 mm	1050 mm	1150 mm	1060 mm
Track width		1750 mm	1950 mm	1950 mm	1950 mm	1950 mm	1950 mm
Plate material of the load area (Hardox)		5 mm	6 mm	6 mm	6 mm	6 mm	6 mm
10-hole axles		□100, 400x80	□150, 410x180	□150, 410x180	□150, 410x180	□150, 410x180	□150, 410x180
Number of braked wheels		4	4	4	4	4	4





The heavy duty sand tipper trailer

The VGM ZK 30-2 series has the best technology for the most difficult conditions. The undercarriage consists of a triangular axle suspension with low maintenance rubber bushes, which guarantees minimal maintenance costs and long life. With its large independent axle articulation, this sand tipper trailer is suitable for any terrain.



MODEL

ZK 30

ZK 30-2

ZK 30-2 ALU

TRI-AXLES

* mandatory from 01-01-2018 ● standard ○ optional × not available

SPECIFICATIONS

	ZK 30	ZK 30-2	ZK 30-2 ALU
4	Tri-axe heavy transport tipper trailer	●	●
5	Hydraulically suspended axle suspension TRIDEC HDO	●	●
	First and third axle forced steering	●	●
	Hydraulic double-acting support leg	●	●
	Hydraulic double-acting tailgate	●	●
	Tapering container, for easier unloading	●	●
	Rotatable towing eye	●	●
	Rear trailer hitch	●	●
	Hose support on the drawbar	●	●
6	Hydraulically suspended drawbar	●	●
	Bolted mudguards on the load area	●	●
	Tipper cylinder mounted in cardanic suspension (approx. 65 litres)	●	●
	Excluding wheels and tyres	●	●
	LED lighting	●	●
	Bulkhead at top front of container	○	×
	Bulkhead with viewing window	○	×
	Hydraulic jack leg with hand pump	○	○
	Hydraulic jack leg with six-way tap	○	○
	2-pipe braking system hydraulic with ALR*	○	○
	Air braking + ALR valve*	○	○
3	Lockable control box	○	○
	Silage construction	○	○
1	2 rear work lamps	○	○
	Rear tracking plug	○	○
	Reversing alarm	○	○
	Plastic toolbox	○	○
	Schärmüller K80 pick-up hitch	○	○
	Schärmüller K50 connection for steering	○	○
	PVG preparation	○	○
	Screw-on ZK-2 water barrier	○	○
	Sprayed in company colour (max. 2 colours)	○	○
	Automatic lubrication system	○	○
	Scoop support on the underside of container	○	○
	ZK-2 dredge clamp	○	○
	ZK-2 folding bumper*	○	○
	RDW type approval*	○	○
	Parking brake	○	○
	Semi-automatic height control	○	○
	PTO / pump	○	○
	Quick release valve	○	○
	Lifting axle on front axle	○	○
	Stepladder on aluminium roof hatches	×	○
2	Type MK2 aluminium roof hatches	×	○
	ZK-2 rear hatch edge panel with asphalt board	×	○
	Security on aluminium roof hatches	×	○
	Stepladder at front of container	○	×



		ZK 30	ZK 30-2	ZK 30-2 ALU
Exterior dimensions	Length	8400 mm	8250 mm	8250 mm
	Width	2550 mm	2540 mm	2550 mm
	Height	2800 mm	2695 mm	2800 mm
Interior dimensions	Length	6700 mm	6600 mm	6600 mm
	Width	2250 mm	2300 mm	2300 mm
	Height	1200 mm	1050 mm	1180 mm
Track width		2050 mm	1950 mm	1950 mm
Plate material of the load area (Hardox)		6 mm	6 mm	6 mm
10-hole axles		□150, 410x180	□150, 410x180	□150, 410x180
Number of braked wheels		6	6	6



The design and technical specifications of the products in this brochure may be under development and may differ from the actual features. Subject to amendment, typesetting and printing errors. Supply in accordance with the latest submitted version of the Metaalunie terms & conditions lodged with the Clerk of the Court of the district court of Rotterdam.

© 2018 Van Ginkel Machines. All rights reserved.



**CLASS
IN
CAPACITY**

VG
VAN GINKEL MACHINES

Groenekanseweg 26
3737AG Groenekan
Tel: 0346-218118
Fax: 0346-218030
Email: info@vanginkelmachines.nl
Website: www.vanginkelmachines.nl